

Move-in Ready Medical Office

Brunswick, Glynn County, GA 31525



FOR SALE

- Address: 3215 Shrine Road, Unit # 3, Brunswick, GA 31520
- 2,255 ± SF office
- This one-story building is modern and in excellent condition. Move your practice and get up and running quickly.
- Very functional layout . Features: 4 offices, reception/waiting area, 2 admin areas, lab room, 2 ADA compliant bathrooms, 5 exam rooms, and a concrete ramp.
- Includes surgery suite with independent air conditioning and humidity control.
- Located one block from Southeast Georgia Regional Hospital in Tower Medical Park. The hospital is within view of the property.
- Price: \$425,000

Robert Driggers, CCIM

912-2506-9837

912-634-5900

rdriggers@driggerscommercial.com



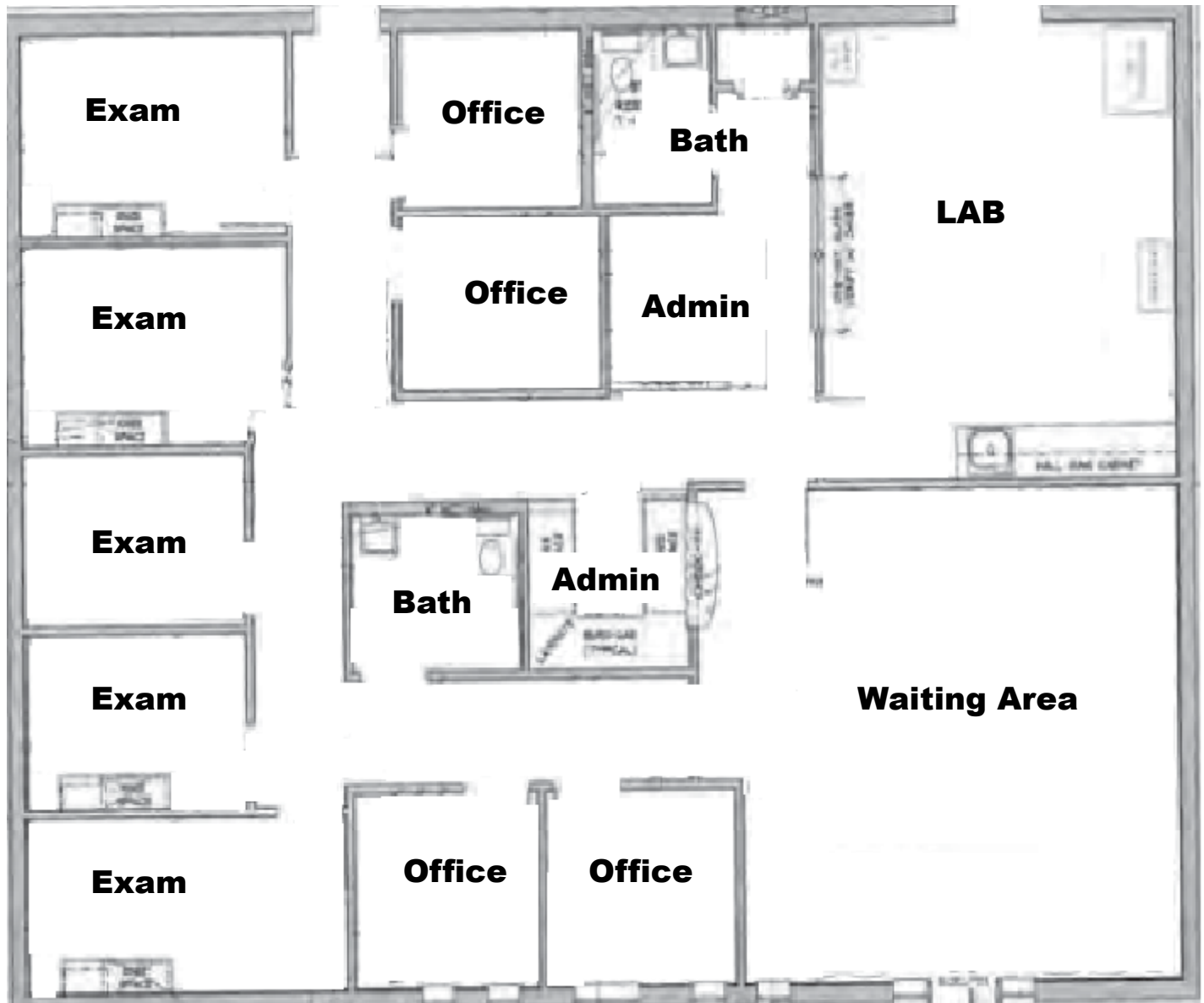
Information is deemed from reliable sources. No warranty, expressed or implied, is made as to its accuracy.

Medical Office
Brunswick, Glynn County, GA 31520



Information is deemed from reliable sources. No warranty, expressed or implied, is made as to its accuracy.

Medical Office
Brunswick, Glynn County, GA 31520



Information is deemed from reliable sources. No warranty, expressed or implied, is made as to its accuracy.